



Global Coverage,
Two-way Satellite,
Real-time, Rugged, Remote



Results

"After working with a number of vendors, FMS is clearly a cut above the competition."

Ed Stubbs,
Vice-President Transportation,
GEO Transport Inc.

Corporate Offices

Fleet Management Solutions
3426 Empresa Drive
San Luis Obispo, CA 93401

Contact Us

Tel: 1.888.787.0508
Fax: +1.805.787.0509
Email: info@fmsgps.com

Security / Transportation / Mission Execution

Resource Management • GEOTrack Integration • Safety



The GEO Group, Inc. — Geo Transport, Inc.

"We have found FMS to be the best product for accountability and tracking, enabling us to meet CEO objectives and provide safe transit for inmates and drivers."

-Ed Stubbs, US Marshals (retired), VP Transportation, GEO Transport, The GEO Group, Inc.

Background

The GEO Group (GEO) is a world leader in the delivery of correctional, detention, and residential treatment services to government agencies. GEO Transport Inc. (GTI) conducts secure transportation operations which are co-located with GEO detention facilities supporting U.S. Immigration and Customs Enforcement and the U.S. Marshals Service. GTI has provided safe and secure transportation for close to half a million inmates over the last two years, traveling more than 3 million miles serving 15 GEO Group facilities in 9 U.S. states.

Business Drivers

- » Safety and security of GTI drivers, who are also law enforcement officers
- » Effective mission execution, GEO is accountable to U.S. ICE and Marshals agencies
- » Integration between GTI GEOTrack application and the GPS fleet tracking system
- » Accurate and current data to support resource management, allocation and acquisition planning

Solution

Resource Management

Optimal assignment of GEO Group custom vehicles requires that appropriate assets be available and located in the right place at the right time. Per trip and per inmate costs are controlled by matching the fleet needs with the operation. Vehicle purchase planning depends upon accurate historical data and enables The GEO Group to support the U.S. Go Green programs and acquisition of alternate fuel vehicles.

Mission Execution and Accountability

FMS real-time operations alerts such as speeding and vehicle status enable GTI to execute safe and secure transportation operations that are second to none. Location awareness insures rapid and appropriate response in case of catastrophic events. Client billing, issue resolution and other accountability requirements to U.S. Government agencies are supported by the data captured throughout the operations.

GEOTrack Integration

The GTI in-house transportation application called GEOTrack enables all operations to be conducted safely and effectively. Route compliance, dispatch and driver advisories are among its capabilities. Many GEOTrack features are enabled by real-time data feeds from FMS Fleet Central. Tight integration between the applications reduces costs, manages essential data and provides valuable information should any incident occur on the road.

Safety

The most critical factor in GTI conducted operations is the safety of both inmates and drivers. FMS features, alerts, and reporting provide effective monitoring of all transport activities. Should drivers and vehicles make unexpected stops, the GEOTrack team immediately can assess the situation and with two-way satellite communication anywhere in the world, insure that operations continues successfully.



Client satisfaction, results and continuous return on investment begin with quality training and installation support.

FMS works closely with every client to ensure system installation and deployment is complete and on schedule.

With an online knowledge base and truly helpful documentation you may never encounter a problem you can't solve yourself. But if you do, FMS is just a phone call away.



Ready for a live system demonstration?

To request a live demo, or if you have any questions, visit www.fmsgps.com/contact.aspx

Complete the contact form and a qualified FMS representative will respond promptly.



Benefits achieved by GEO Transport, Inc.

Safety and Security

GTI delivers safe and secure transportation of drivers and inmates anywhere and anytime

Accountability to U.S. Agencies

Effective mission execution for U.S. Immigration and Customs Enforcement and U.S. Marshals agencies

Operations Efficiency

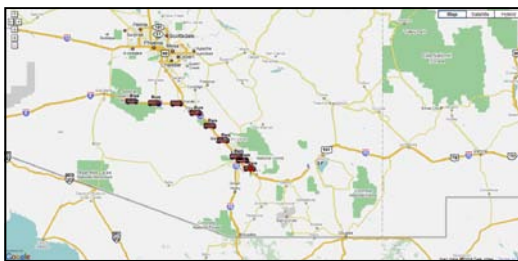
An integrated data solution between FMS GPS fleet tracking and GEOTrack supports operations success

Resource Management

Optimal allocation of GTI vehicles and resource planning are accomplished with fleet operations data

Fleet Central provides GEO Transport with Accurate Operations Data and Compliance

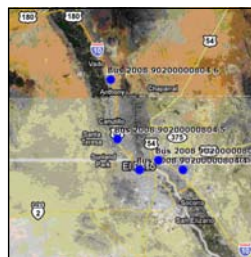
Behind all the benefits provided to GEO Transport, Inc is FMS Fleet Central. All fleet management tools and administration are available via web browser and supported by the secure FMS network operation center. Create landmarks, boundaries, program alerts, run reports, and enhance fleet efficiency from Fleet Central.



Remote Asset Tracking

Location Awareness, Anywhere, Anytime

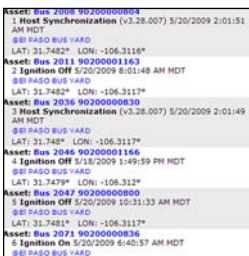
Location knowledge is key to operational efficiency and satellite communications is the key. FMS maps with landmark and rolling asset views assist fleet operations teams make better decisions, faster.



Efficient Operations

Operations Management and Enforcement

Knowing when expensive fleet assets arrive or leave a location or landmark can save time and money. Policy abuse and unauthorized use can be immediately reported for response and policy enforcement.



Efficient Resource Allocation

Appropriate Deployment of Vehicles

Managing large teams in remote areas can be costly and ineffective without current and accurate knowledge. Mission success and best use of resources depends on proper and timely communications with the fleet.

About Fleet Management Solutions, Inc.

Fleet Management Solutions provides GPS and all-satellite fleet tracking and monitoring with 100% remote coverage and two-way communications. FMS manufactures rugged and reliable on-board equipment and web-based mapping and reporting tools. FMS clients improve asset utilization, safety, and productivity while reducing theft and the costs associated with fleet operation, management, insurance and deployment. FMS is a total solution provider for all fleet tracking requirements, including satellite communications services.

